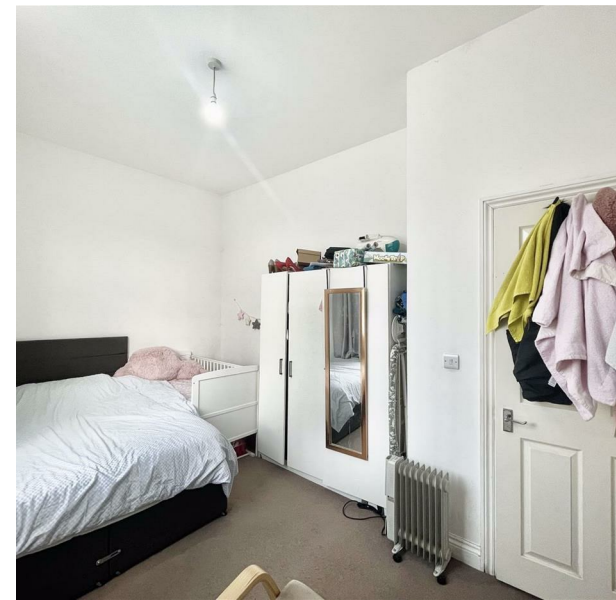


Flat 2, 23 Mark Samuel Court 23 Higham Place, London, Greater London, E17  
6DD

£1,000 Per Month

**COMPLETION**  
SALES & LETTINGS



Flat 2, 23 Mark Samuel Court 23 Higham Place, London, Greater London, E17 6DD

£1,900 Per Month

Council Tax Band: B

Welcome to this modern two-bedroom ground floor flat located in the desirable MSC, E17. Available to let at a competitive price of £1,900 per calendar month, this property offers a perfect blend of comfort and convenience.

Upon entering, you will find a spacious reception room that provides an inviting space for relaxation and entertainment. The flat features two well-proportioned bedrooms, ideal for a small family or professionals seeking a comfortable living arrangement. The modern bathroom is designed with contemporary fittings, ensuring a pleasant experience for all residents.

The ground floor location adds to the appeal, providing easy access and the convenience of not having to navigate stairs. The flat is situated in a vibrant area, with local amenities and transport links nearby, making it an excellent choice for those who value accessibility and community.

This property is perfect for anyone looking for a stylish and practical living space in a sought-after location. Do not miss the opportunity to make this lovely flat your new home.





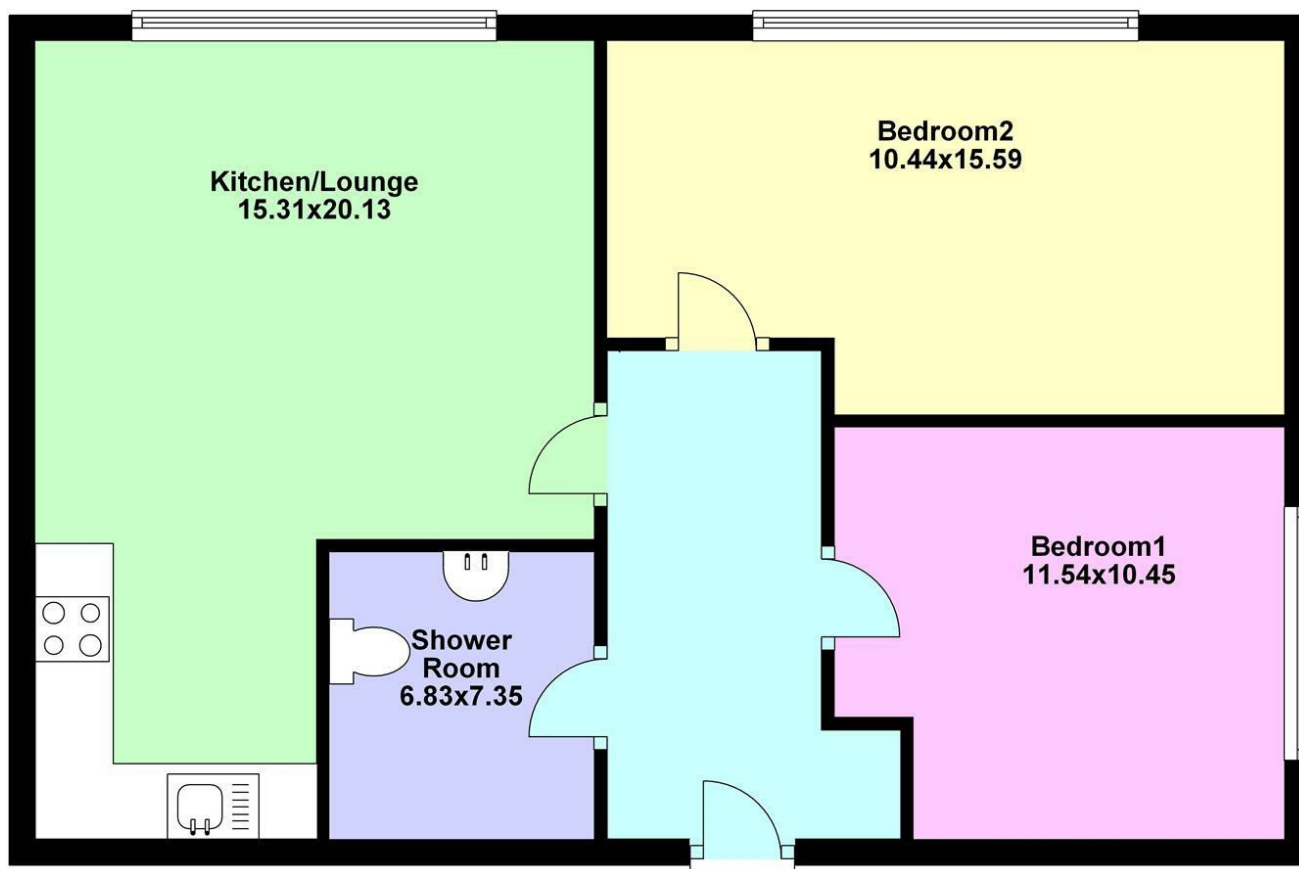






## Ground Floor

Approx. 56.9 sq. metres (612.5 sq. feet)



337 Forest Road

London

E17 5JR

02085277007

enquiries@completion.co.uk

completion.co.uk

Energy Efficiency Rating		
	Current	Potential
Very energy efficient - lower running costs		
(92 plus) <b>A</b>		
(81-91) <b>B</b>		
(69-80) <b>C</b>	78	79
(55-68) <b>D</b>		
(39-54) <b>E</b>		
(21-38) <b>F</b>		
(1-20) <b>G</b>		
Not energy efficient - higher running costs		
England & Wales EU Directive 2002/91/EC		